



Dissection of the anterior neck and face

Dr. Indira Kitulwatte

Electronic formatting:

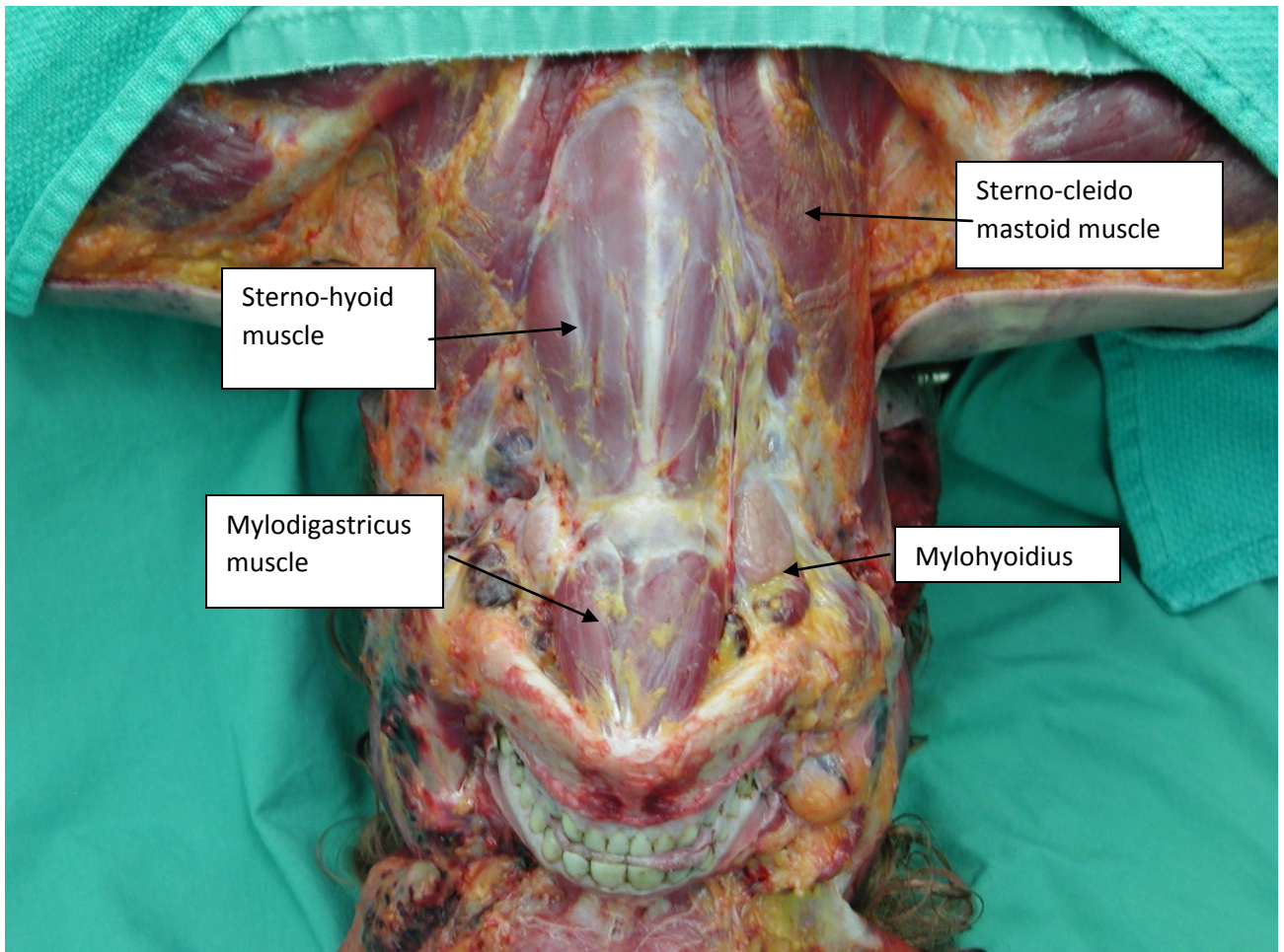
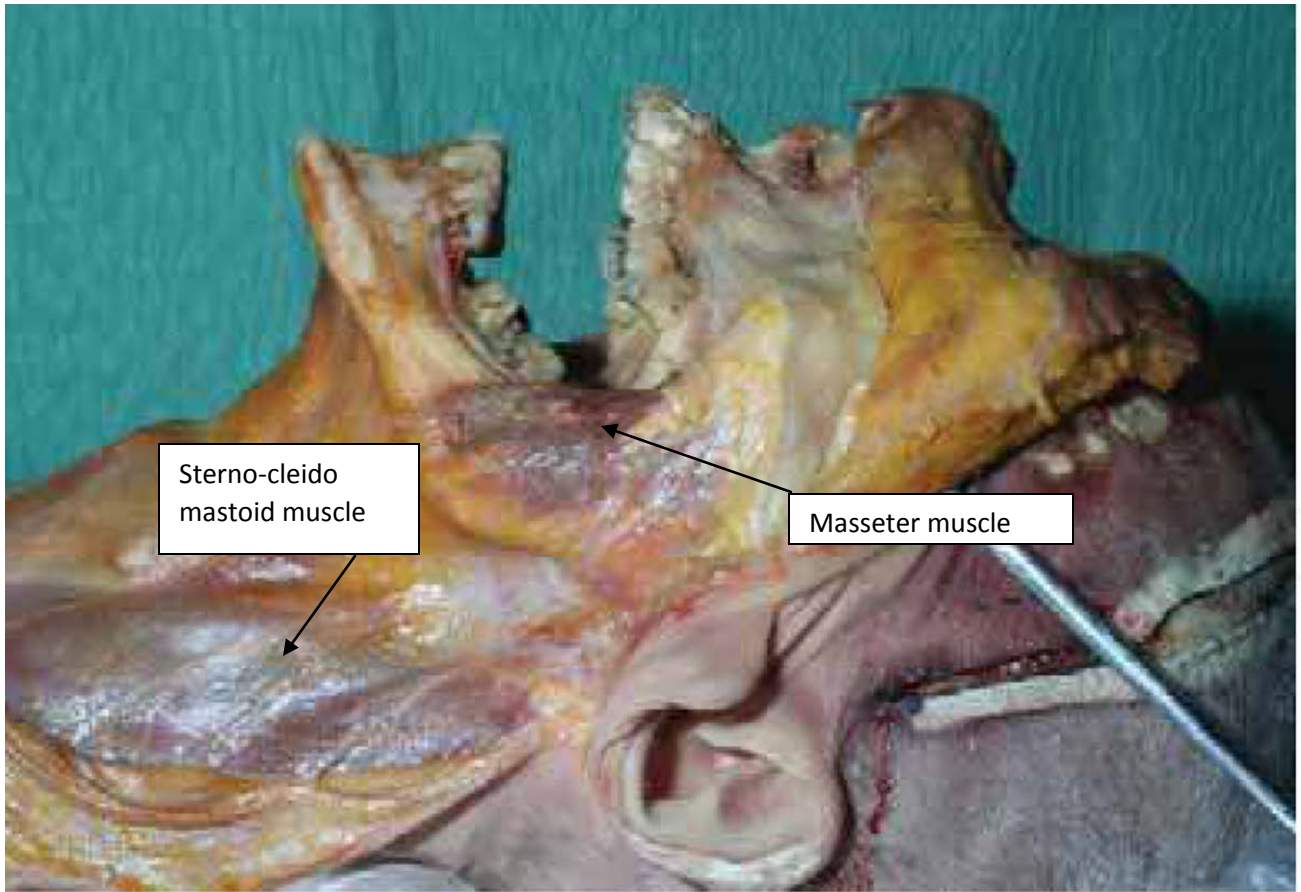
Dr. W.S.K.C. Fernando

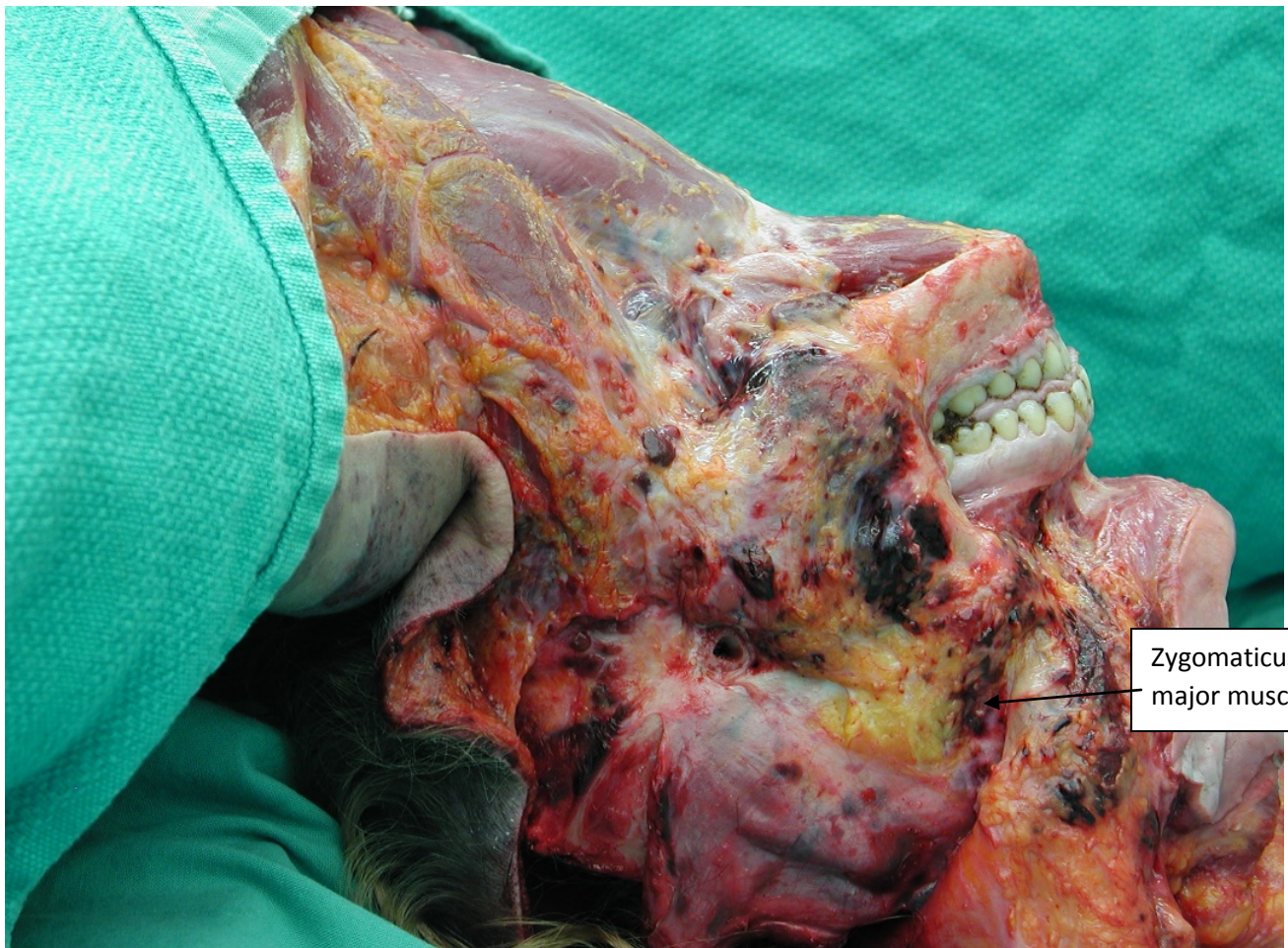
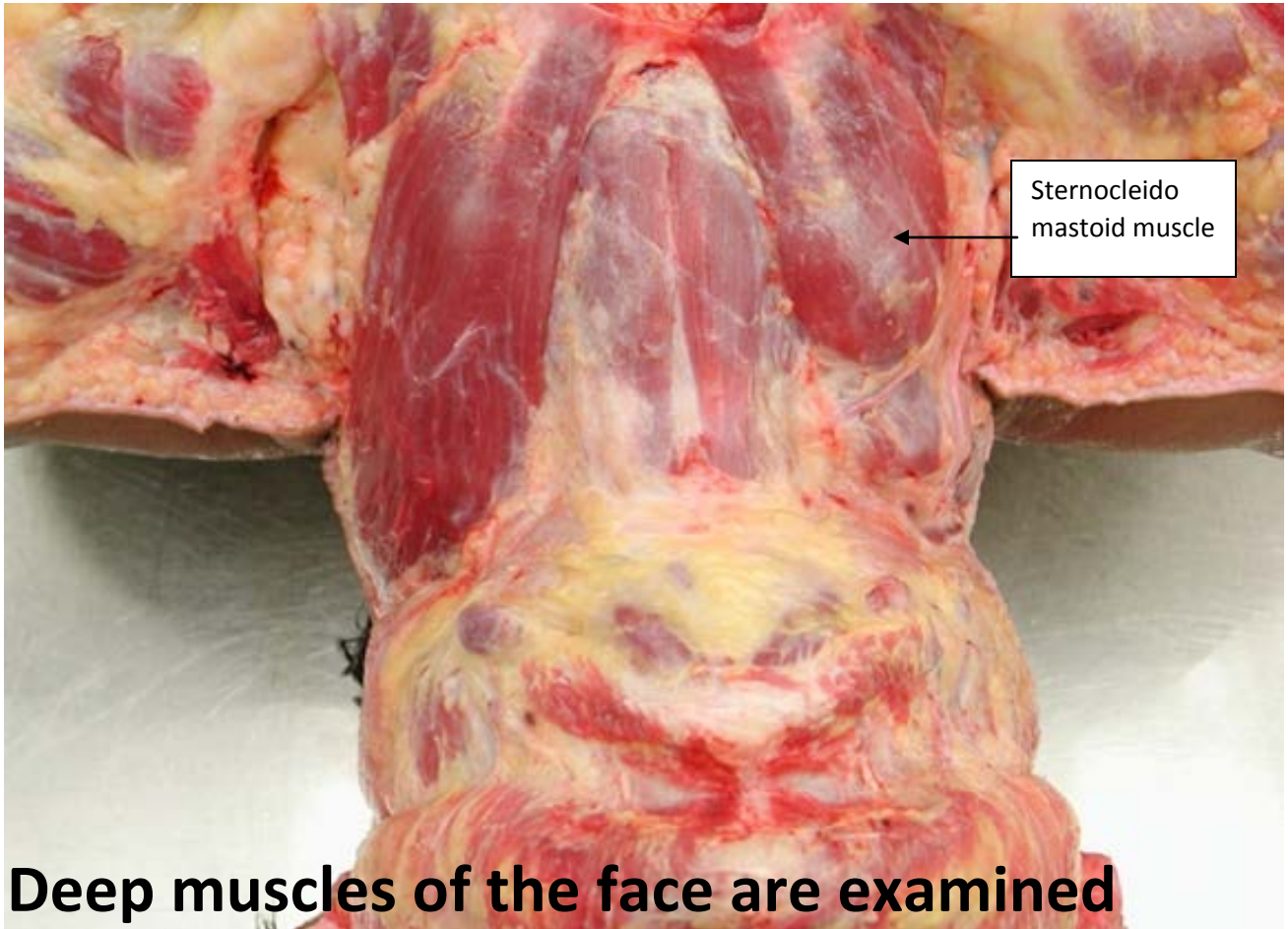
Dissection of the anterior neck and face.

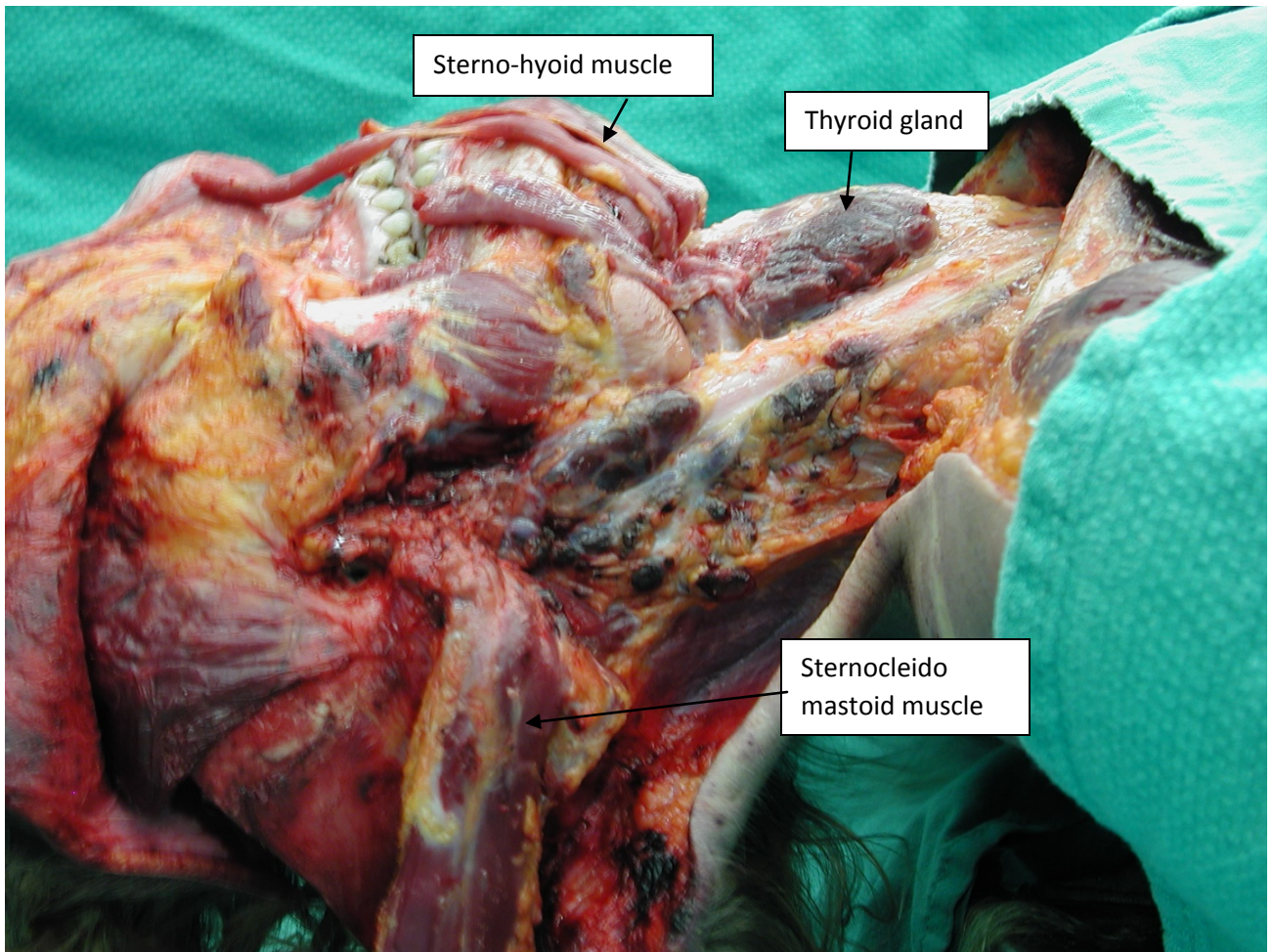
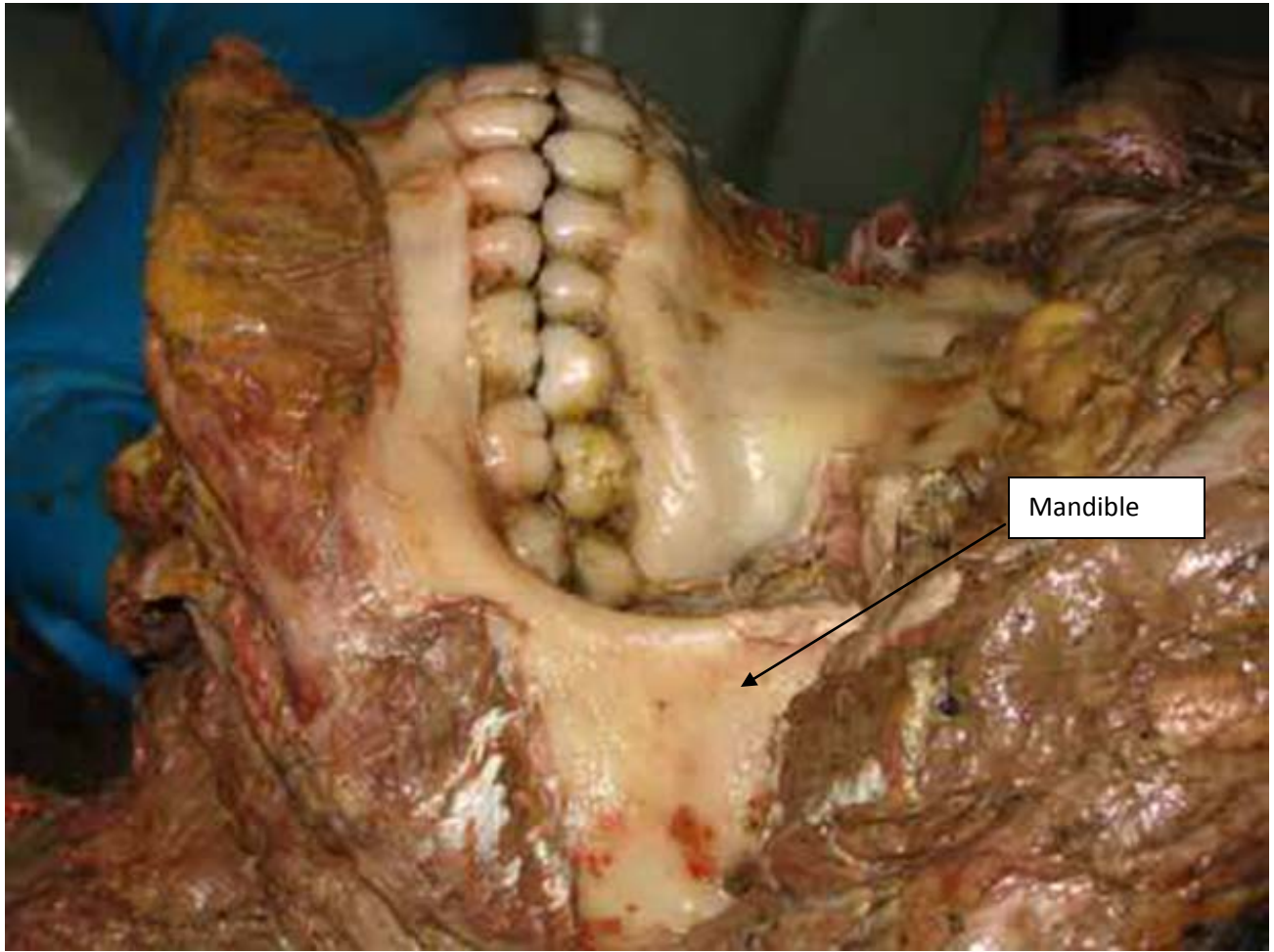
Continue the scalp incision as a “V” or “U” incision to the neck.

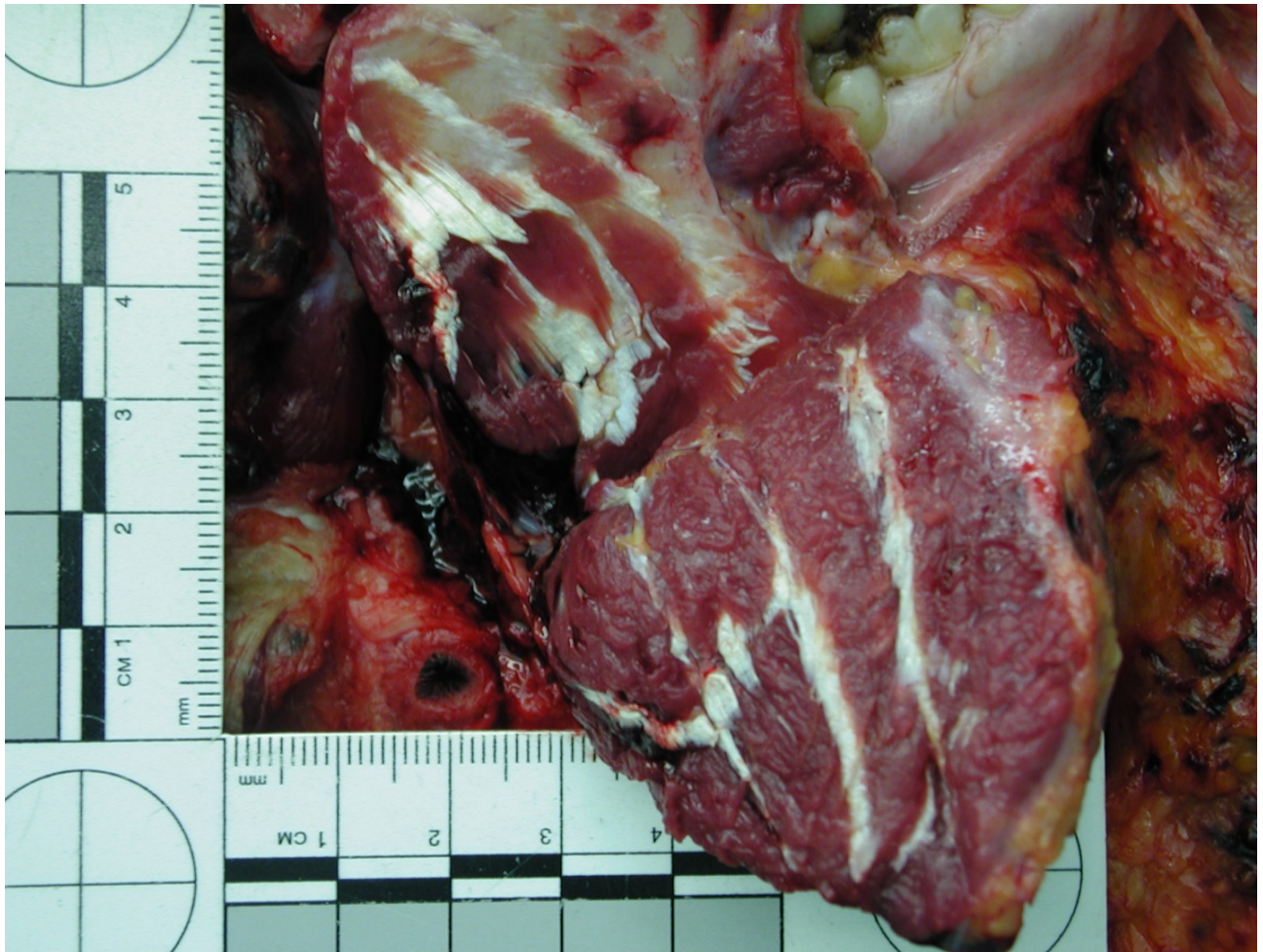


- Reflect the skin flap upwards up to the nose to display the underlying facial soft tissue and/or bone.
- Anterior scalp incision lowered down to supra orbital area and from sides continue to cheeks (towards lateral sides of nasal attachment)
- Neck flap is extended up to join the above



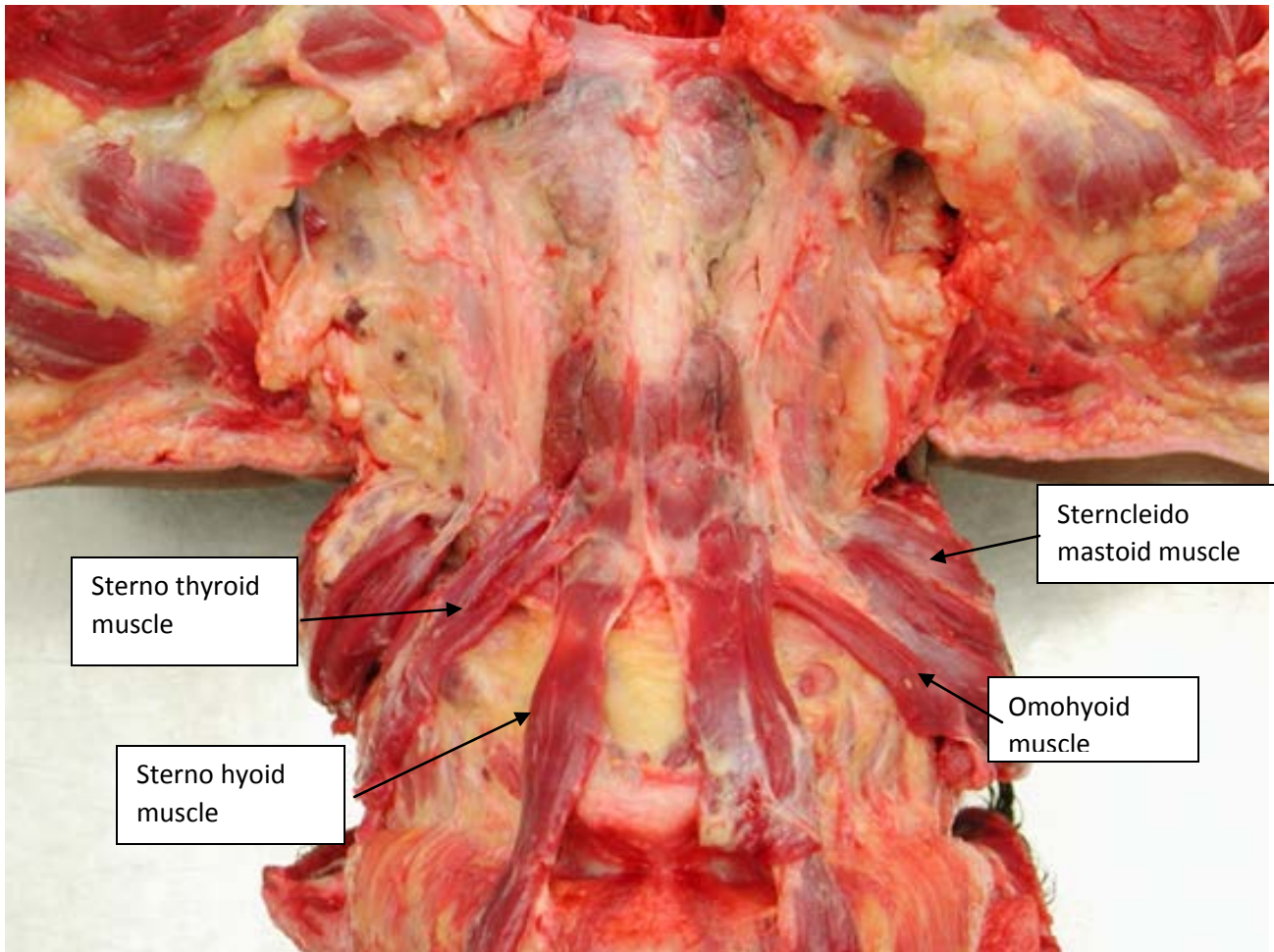
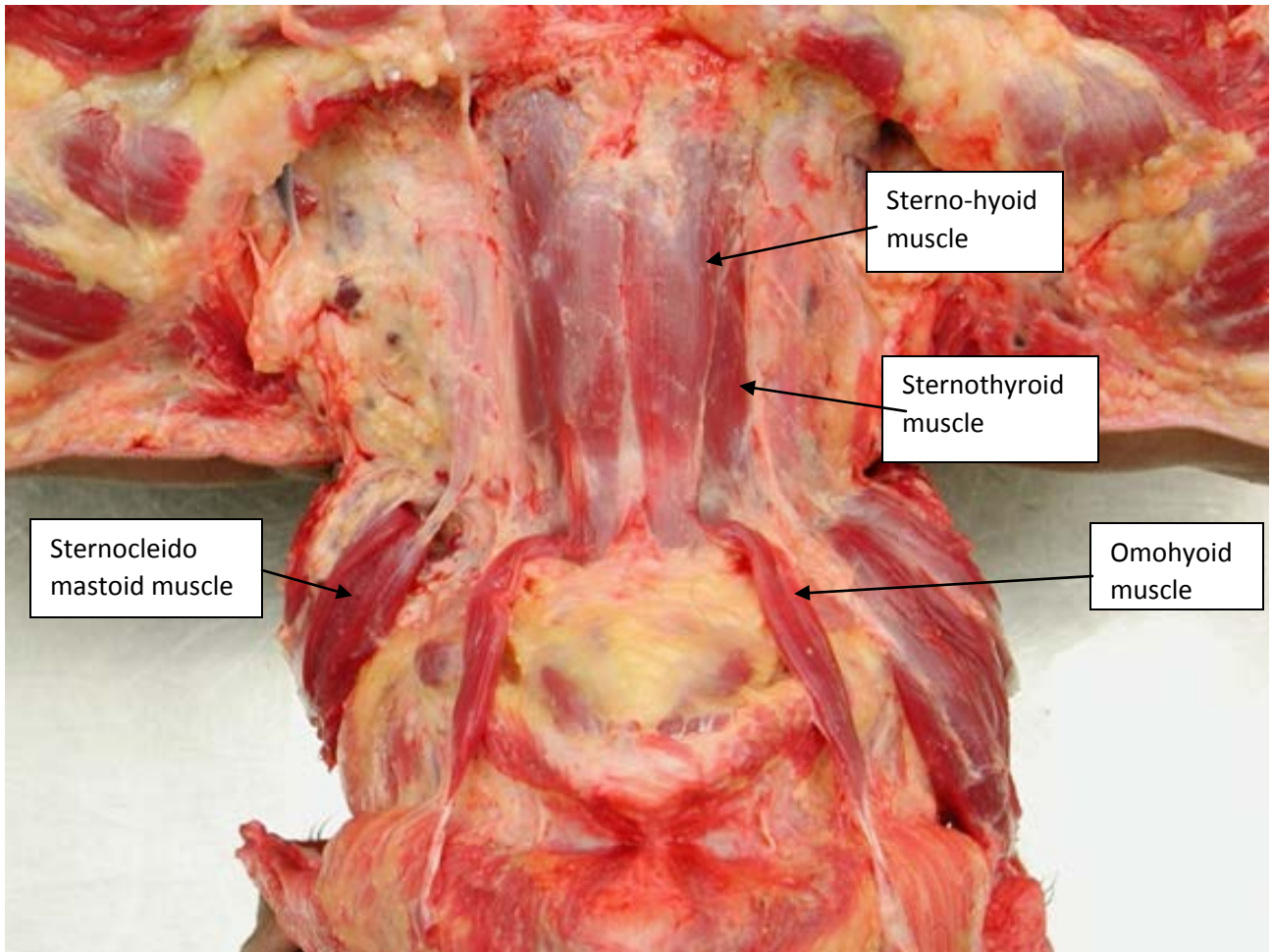


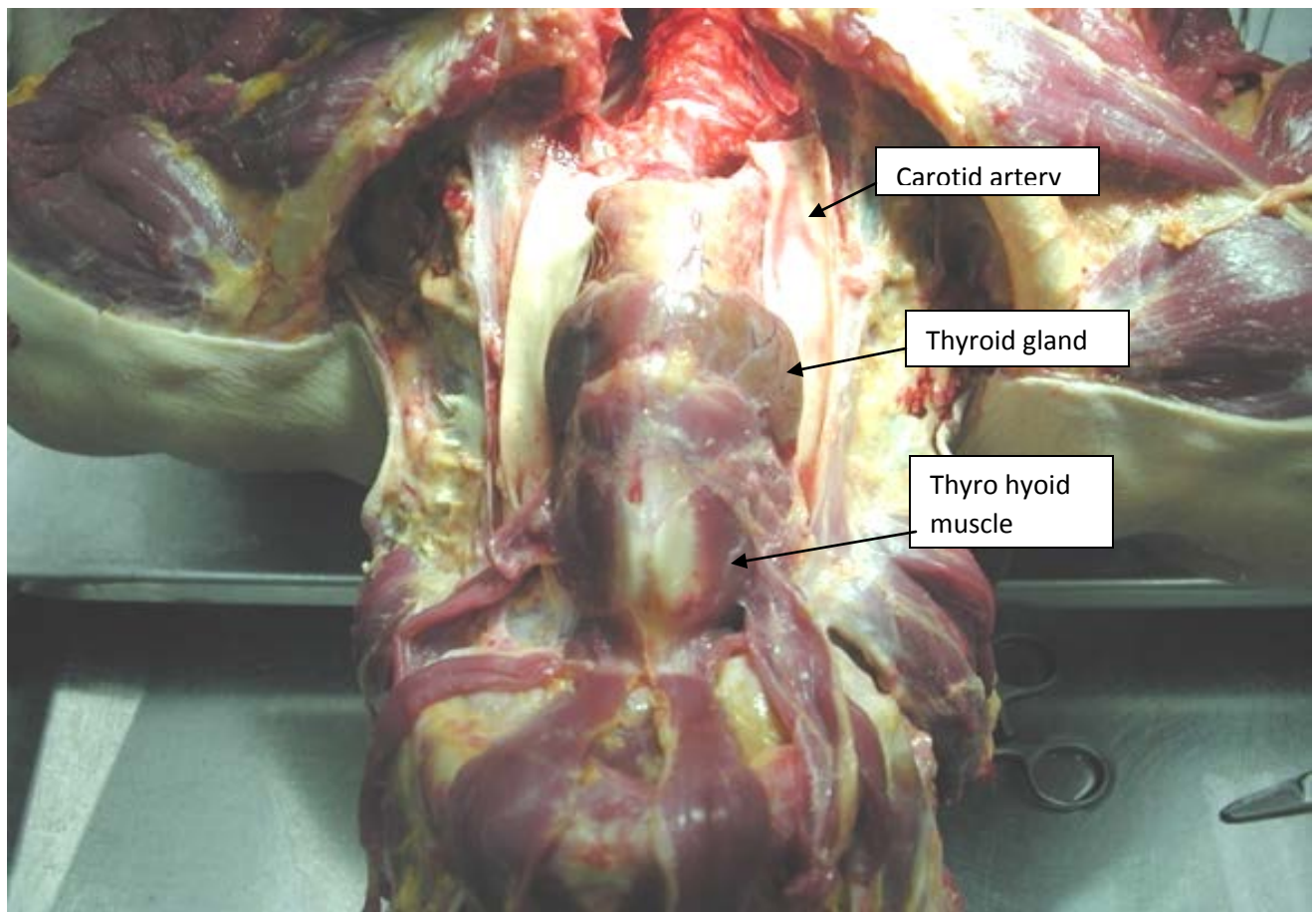




Reflect the muscle layers

(sternocleidomastoids, sterno-hyoids, sterno-thyroids, crico-thyroids, and thyro-hyoids)





Examine the thyroid gland

Examine the thyroid cartilage
and hyoid bones for fractures

Take the neck organs out and open the larynx and trachea on the cutting board

