

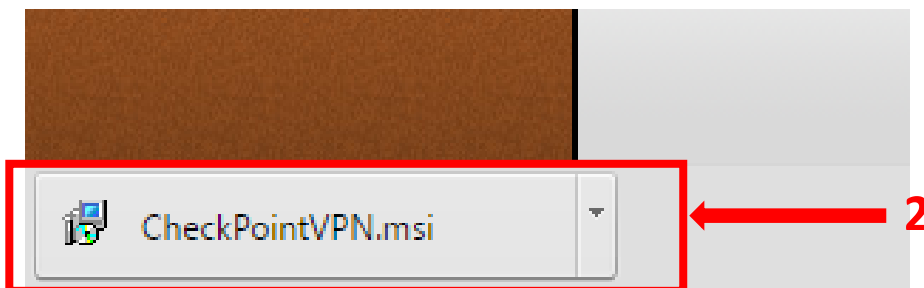
Step By Step Guide To Download and Install VPN Client

Computer Center- Faculty of Medicine University of Kelaniya

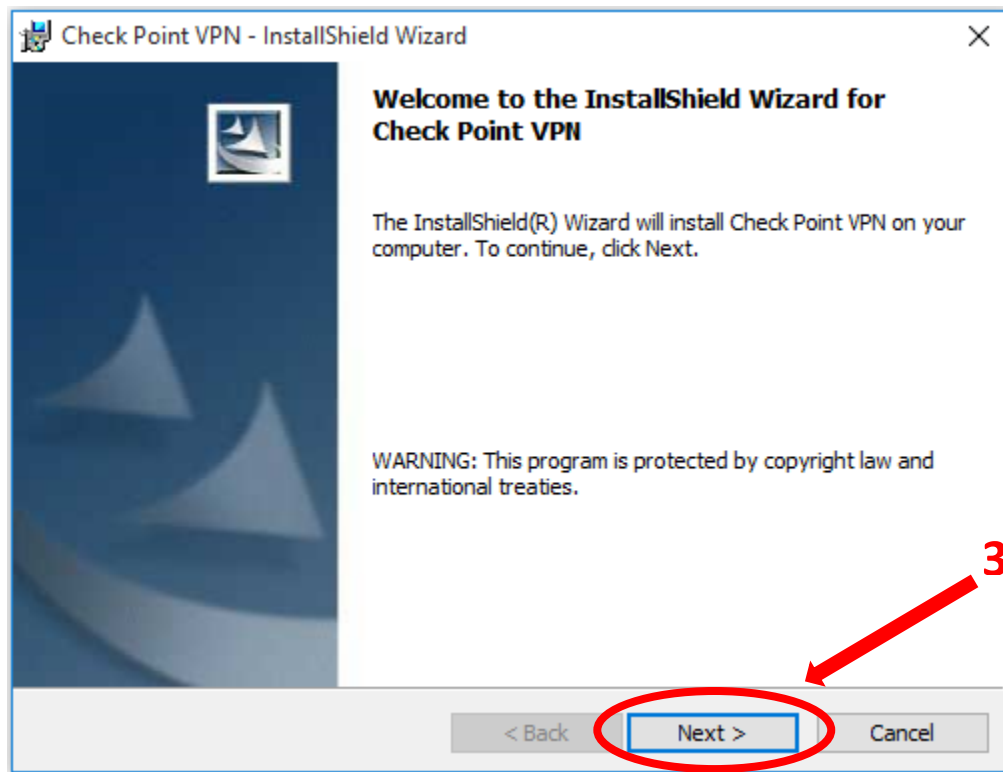
1. Go to this link <http://www.kln.ac.lk/medicine/centres/ictc/> and then Click on the link “Download VPN Client”



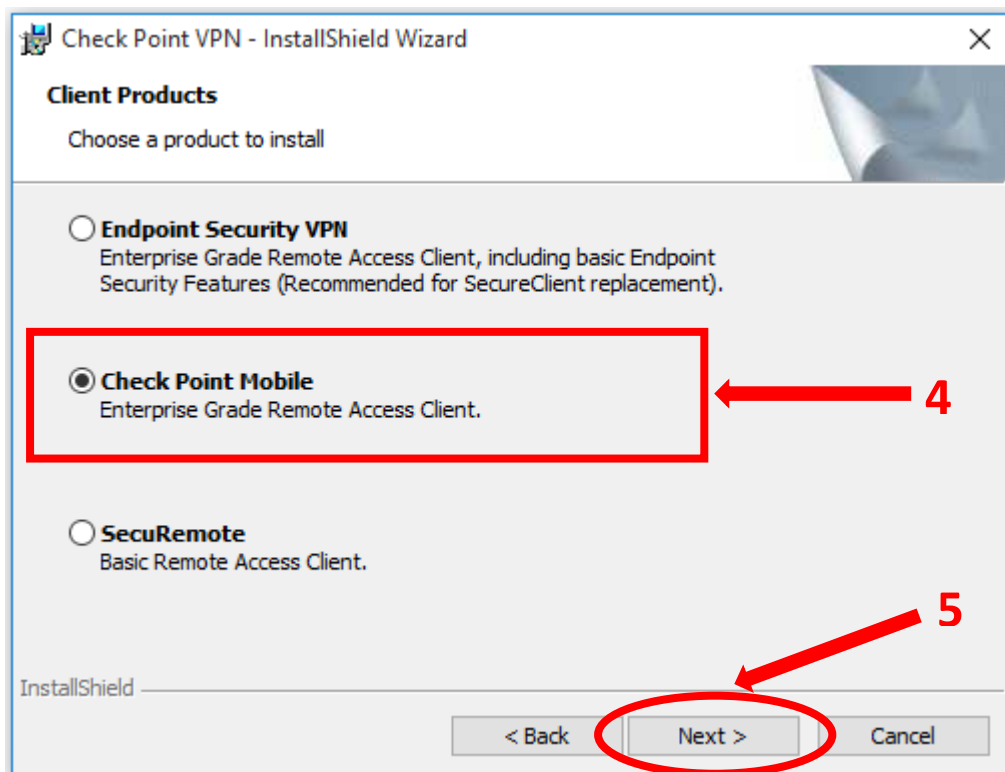
2. After downloading the “VPN Client”, open the downloaded file, “CheckPointVPN.msi”.



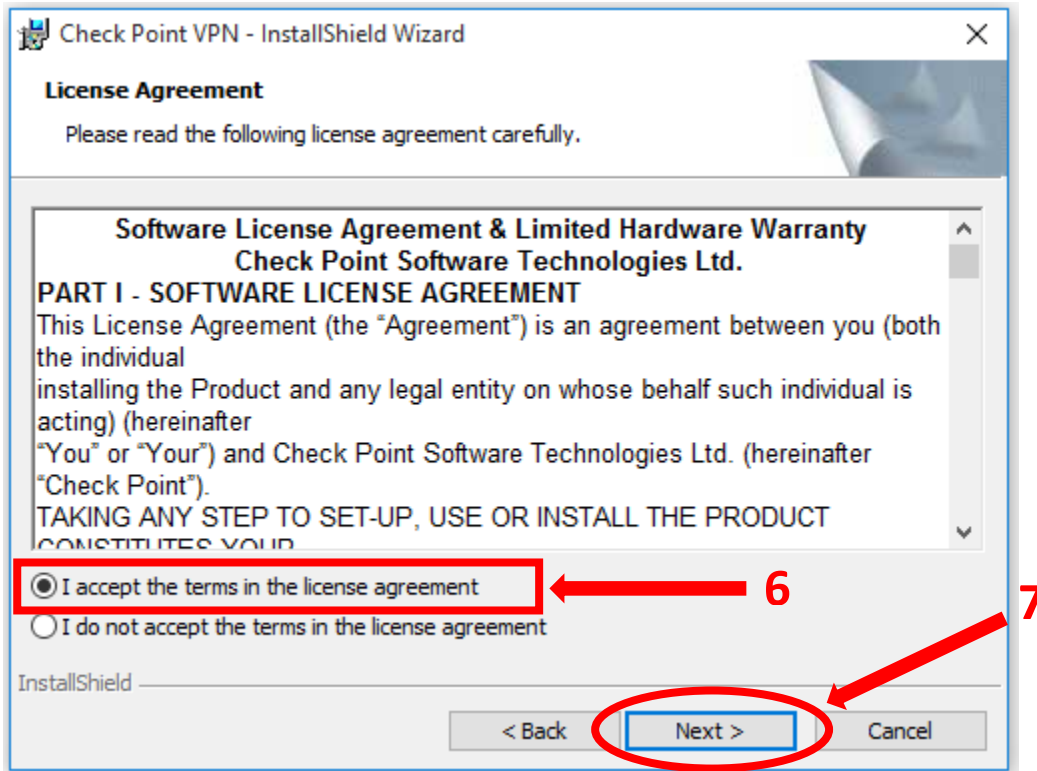
3. An **Install Shield Wizard** will be opened for installation and click on **“Next”**.



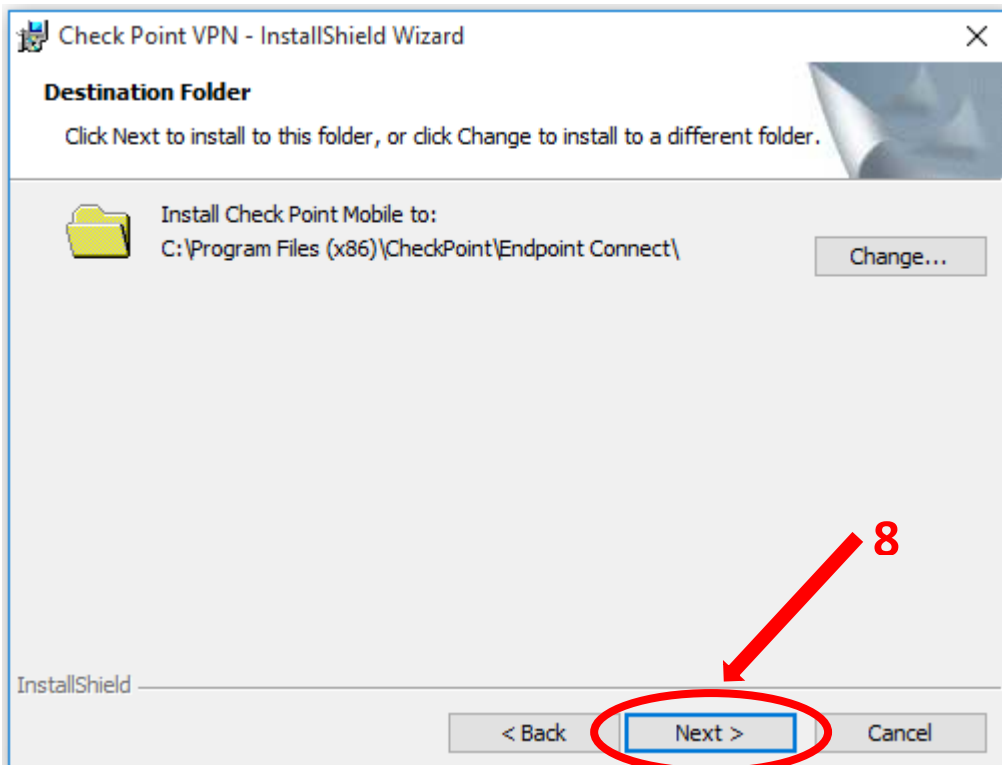
4. Select **“Check Point Mobile”** and then click on **“next”**.



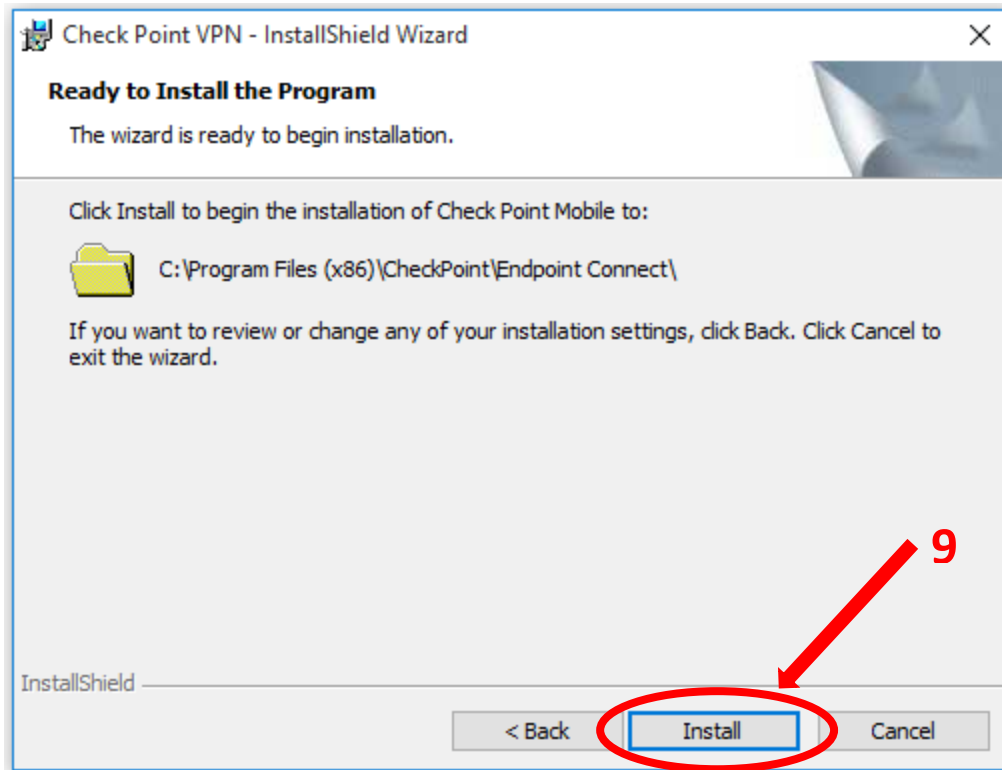
5. Read and accept the terms in the license agreement and then click on “Next”



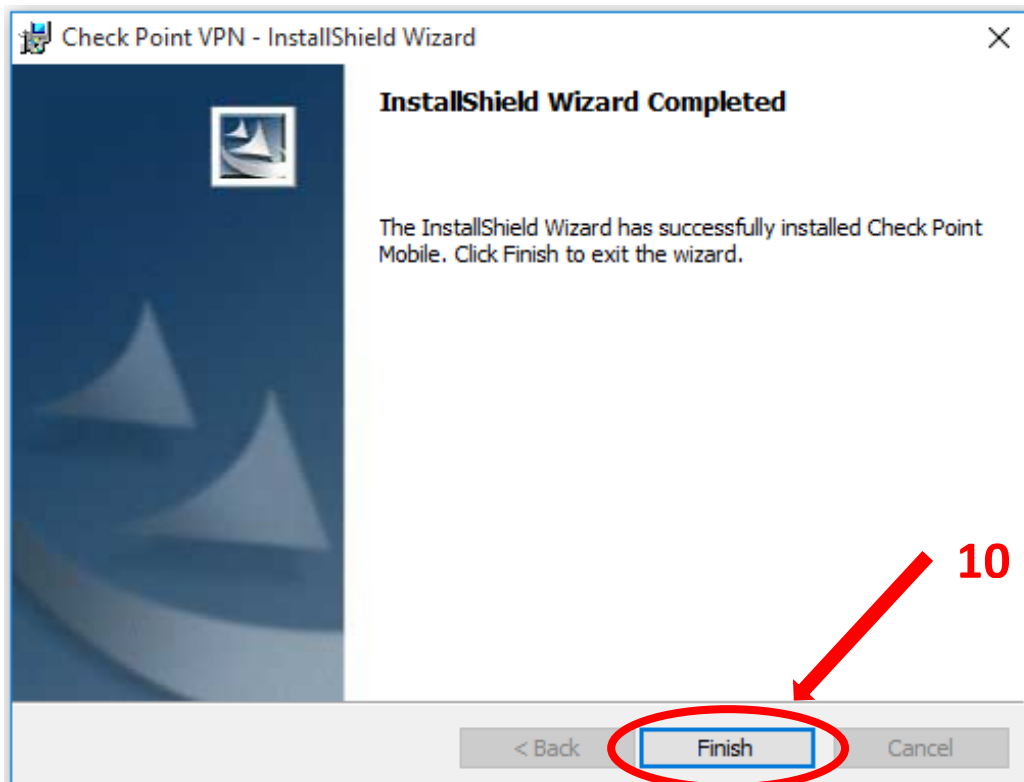
6. Do not change the default destination folder and then click on “Next”.



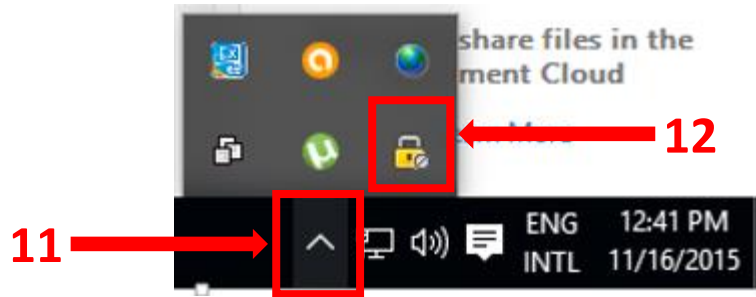
7. Then click on **“Install”**.



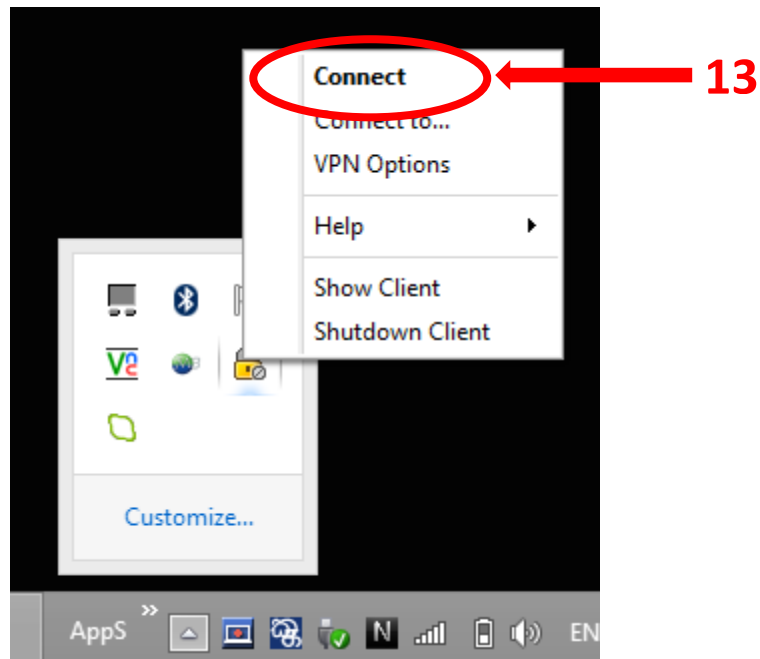
8. Wait until the installation process get completed. After installation process is finished, click on **“Finish”**



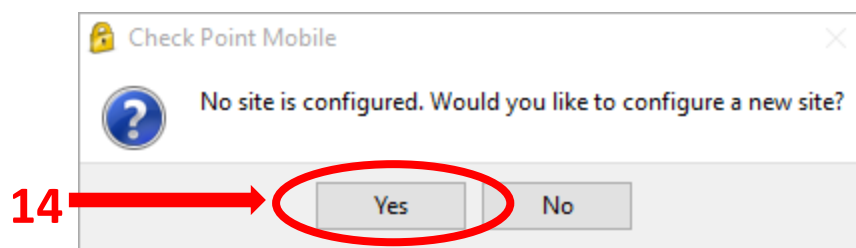
9. Click on **“Show Hidden Icons”** and then right click on **“Check Point Mobile”** icon



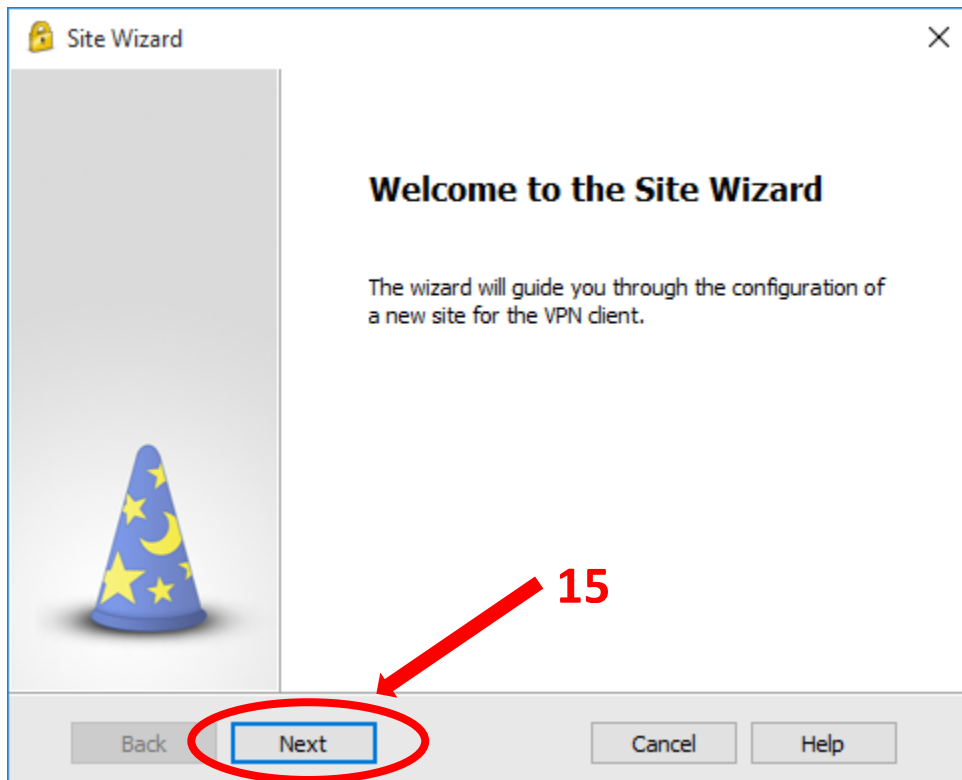
10. Select **“Connect”** from the list.



11. A dialogue box will be opened and click **“Yes”** to configure a new site

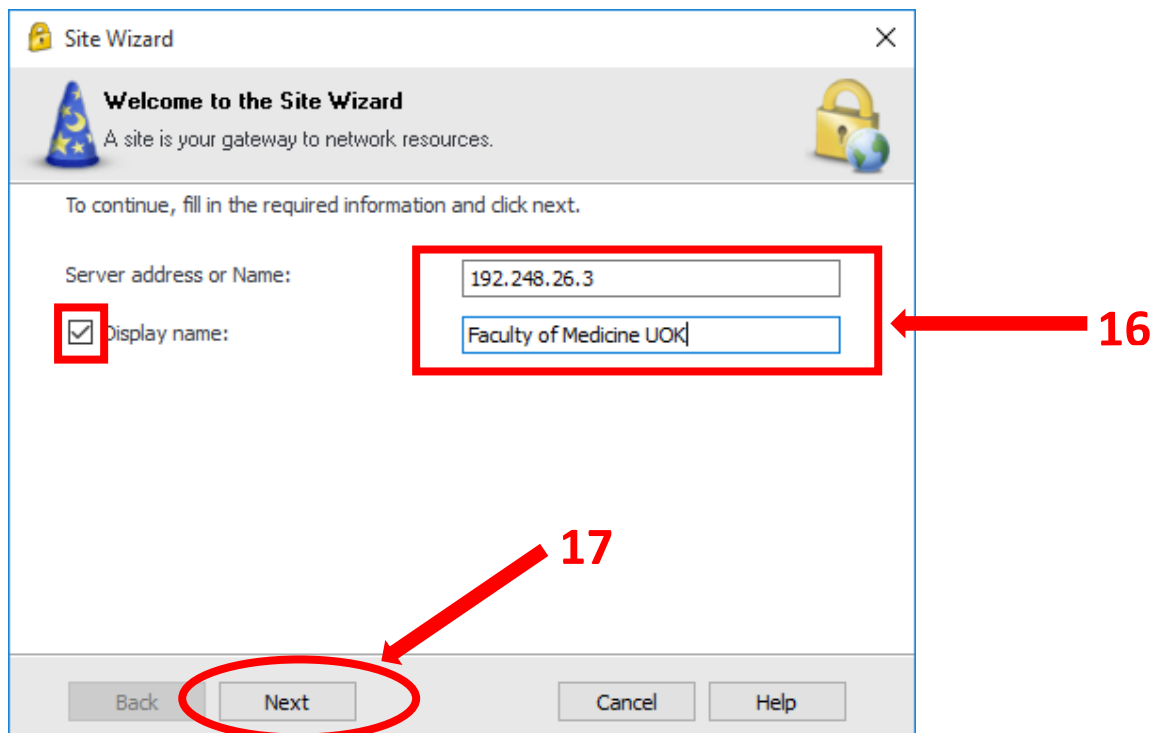


12. A Site Wizard will be opened and click on “Next”.

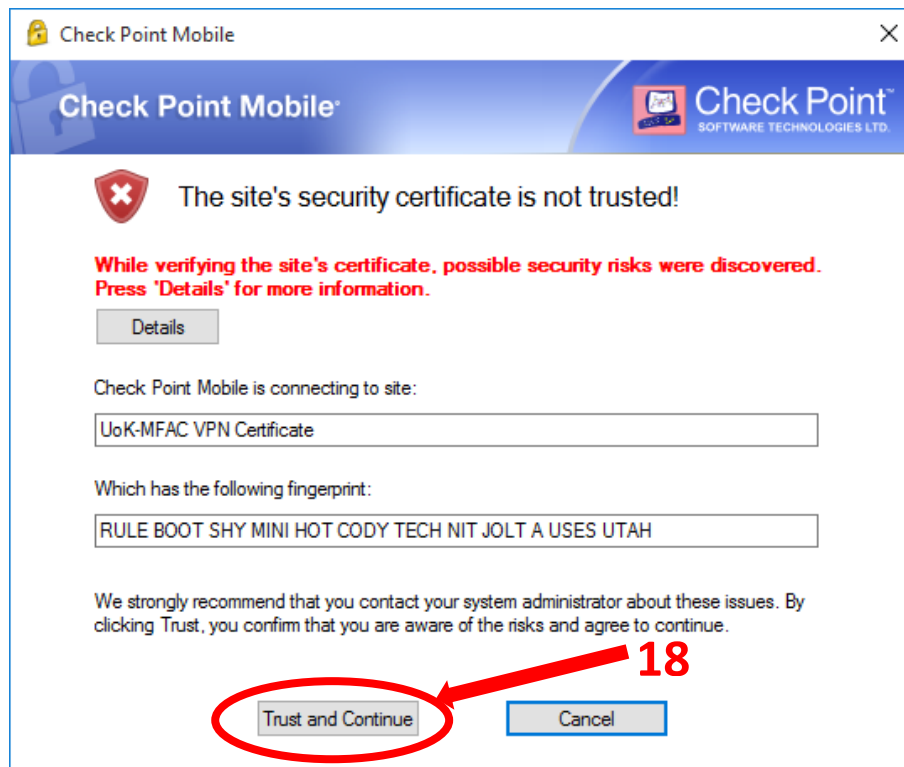


13. Type the server address as **192.248.26.3** and **Check** the box to display the name.

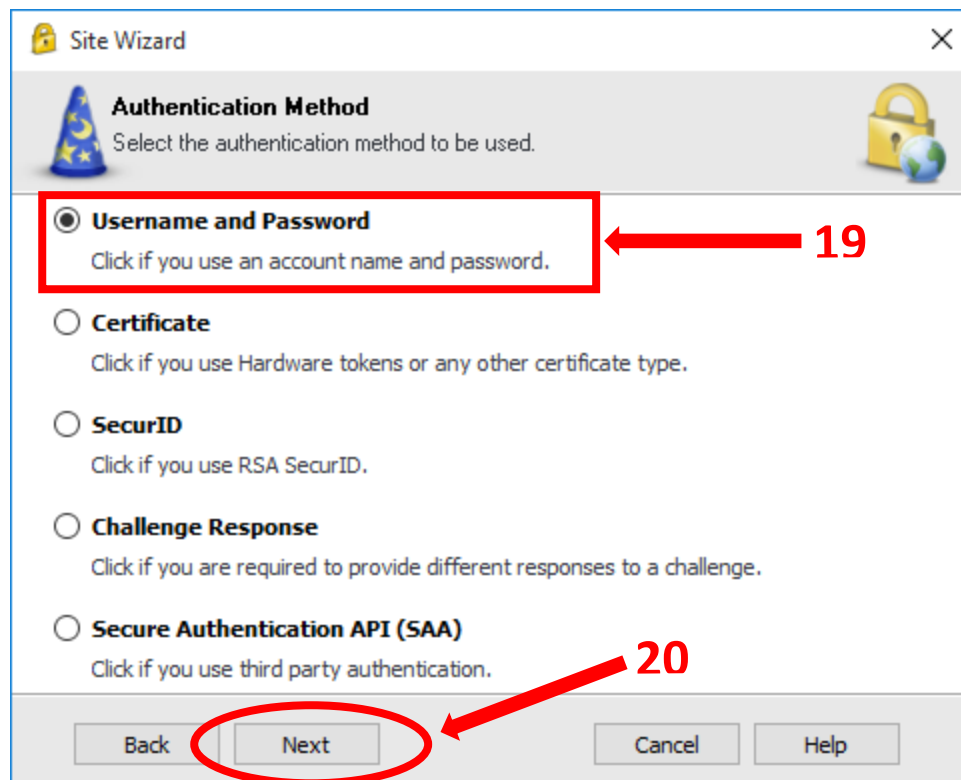
14. Type the name as “**Faculty of Medicine UOK**” and click on “Next”.



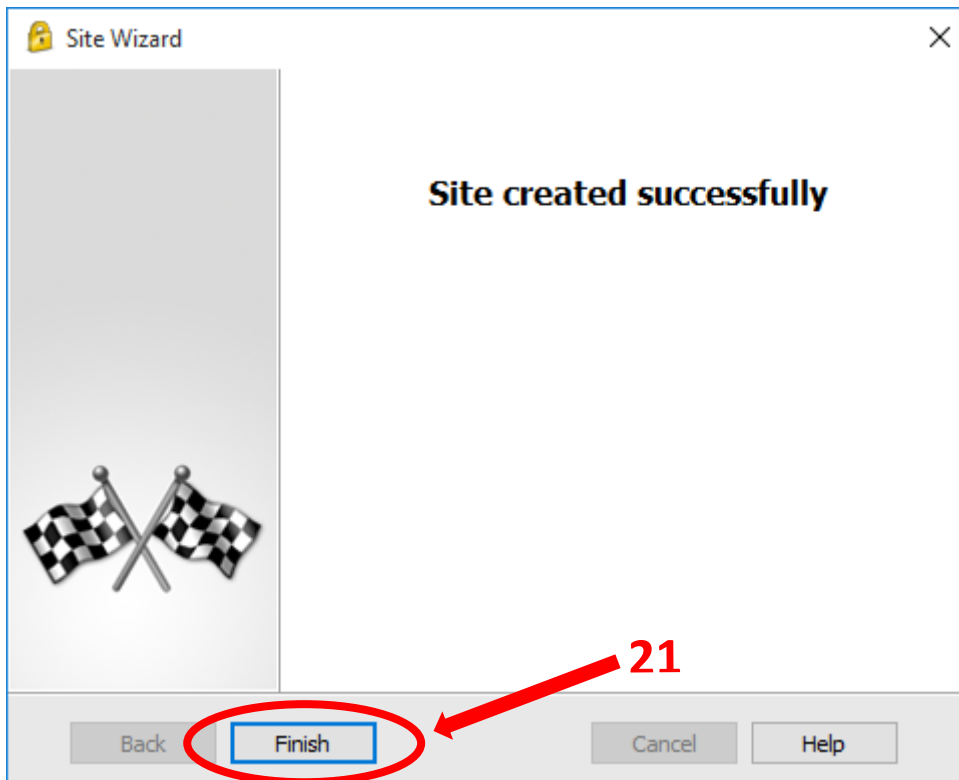
15. Click on “Trust and Continue”



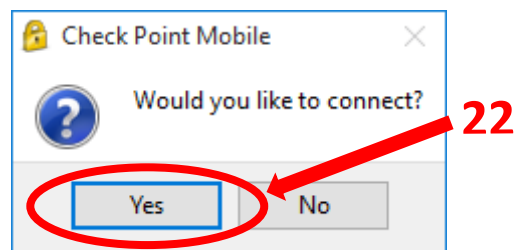
16. Select “Username and Password” as the authentication method and then click on “Next”.



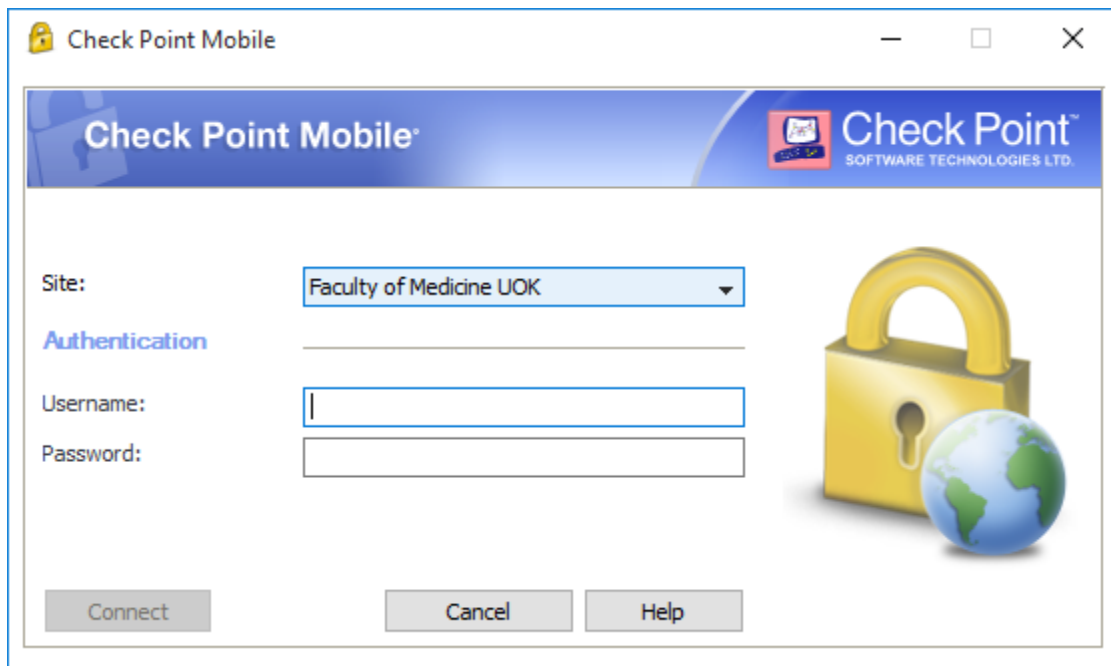
17. After creating the site “**Finish**” the process.



18. A dialogue box will be opened asking to connect to the “**Check Point Mobile**” and click on “**Yes**”.



19. Try with **your username and password** to access through VPN.



The screenshot shows the 'Check Point Mobile' application window. The title bar includes the application name and standard window controls. The main interface features a blue header with the 'Check Point' logo and 'SOFTWARE TECHNOLOGIES LTD.' text. Below the header, there is a 'Site:' dropdown menu currently set to 'Faculty of Medicine UOK'. Underneath, the word 'Authentication' is displayed in blue. There are two input fields: 'Username:' and 'Password:'. To the right of these fields is a graphic of a yellow padlock and a globe. At the bottom of the window, there are three buttons: 'Connect', 'Cancel', and 'Help'.